

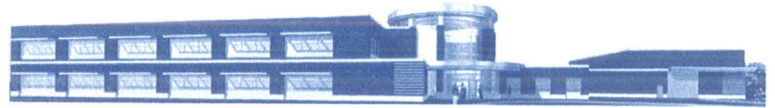
Sheriff
John F. Matz

Chief Deputy
Todd A. Christopherson



Winnebago County Sheriff

www.co.winnebago.wi.us



4311 JACKSON STREET
OSHKOSH, WISCONSIN 54901
(920) 236-7300 (920) 727-2888
JAIL (920) 236-7380
ADMINISTRATION FAX (920) 236-7333
RECORDS FAX (920) 236-7302

January 4, 2013

To whom it may concern,

The Winnebago County Sheriff's Office is committed to promoting a safe and secure community for everyone. Over time, there have been several complaints and concerns raised by the citizens residing near Lake Winnebago. Complaints of speeding vehicles and loud exhausts on the ice have created a nuisance during the winter months. Therefore, an ordinance has been implemented to control the noise and speed of motor vehicles on icebound inland lakes. This ordinance shall include a commercial motor vehicle including snowmobiles, motorcycles, all-terrain vehicles, and utility-terrain vehicles.

The ordinance states the following:

1. No person may operate a motor vehicle at a speed exceeding 10 miles per hour within 100 feet of another person who is not operating a motor vehicle on the frozen surface of an inland lake in Winnebago County.
2. No person may operate a motor vehicle at a speed exceeding 10 miles per hour within 100 feet of a fishing shanty.
3. Operator of motor vehicle shall yield the right of way to another person who is not in or operating another motor vehicle, and who is within 100 feet of the operator's motor vehicle.
4. No person shall operate a motor vehicle at a rate of speed that is unreasonable or improper under the circumstances, or is in excess of 25 miles per hour, while traveling within 250 feet from the shoreline.

5. No person shall operate a motor vehicle on the frozen surface of an inland lake in excess of 25 miles per hour while travelling in a continuous route, track, or course, including, but not limited to, a serpentine, circle, oval, or any other path of travel which is not a straightway, unless the continuous route, track, or course is located 1,000 feet from the shoreline.
6. No person shall operate a motor vehicle on the frozen surface of an inland lake unless it is equipped with a muffler in good working order. While in stationary operation exhaust and overall engine noise levels shall not exceed 96 decibels.
7. Any person operating a motor vehicle on an icebound inland lake during hours of darkness is required to light all headlamps, tail lamps, and clearance lamps with which the vehicle is required to be equipped.

Please assist us in educating any customers or club members on the new ordinance. If you have any questions concerning the new ordinance please contact the Sheriff's Office at 920-236-7300.

Thank you,

Deputy Erica Geschrei
Community Programs Coordinator
Winnebago County Sheriff's Office