

TOWN OF NEENAH TOWN BOARD
Meeting Agenda
REVISED to ADD Item 11

DATE: Monday, July 28, 2025 **TIME:** 7:00 pm **LOCATION:** 1600 Breezewood Lane

The meeting will also be offered virtually via ZOOM.

Meeting ID: 897 0658 3474 Passcode: 352110 Phone (312) 626-6799

Zoom Link: <https://us02web.zoom.us/j/89706583474?pwd=WrrR95rmTGbOcXTEKkWfMiq8uN2hmHb.1>

TOWN BOARD MEETING

1. CALL TO ORDER TOWN BOARD
2. APPROVE MINUTES July 14, 2025 Town Board Meeting
3. PUBLIC FORUM
4. PUBLIC FORUM FOR RECOGNIZED MUNICIPAL AND COUNTY OFFICIALS
5. CORRESPONDENCES
6. DISCUSSION / ACTION
 - a) Approve Vouchers, Payroll and Bank Transactions July 28, 2025
 - b) Discussion Resolution 2025-13 – Certified Survey Map
Applicant: Town of Neenah
Agent: Davel Engineering
Location of Premises Affected: 1573 Oakridge Rd
Tax Parcel No: 010-02180603 and 010-021808
 - c) Discussion Resolution 2025-15 – Certified Survey Map
Applicants: Brian P. and Kristine L. Stedl
Agent: Carow Land Surveying
Location of Premises Affected: 1984 Oakridge Rd and 1994 Oakridge Rd
Tax Parcel No: 010-0312
 - d) Appoint Cyndi Pleshek as Deputy Clerk-Treasurer for a three-year term beginning Monday August 11, 2025 and expiring August 10, 2028
7. FUTURE AGENDA TOPICS AND MEETINGS
 - a. Parks and Trails Committee Meeting, Monday August 4, 2025 6:00 pm at Keating Park, 128 Klompen Court.
 - b. Fire Department Business Meeting, Wednesday August 6, 2025 at 6:00 p.m.
 - c. Next Town Board Meeting, Monday, August 11, 2025 at 7:00 p.m.
8. OLD BUSINESS
9. NEW BUSINESS
10. ADJOURN OPEN SESSION
11. CONVENE INTO CLOSED SESSION
The Town Board will convene into closed session pursuant to Wis. Stats §19.85 (1) (e) Deliberating or negotiating the purchasing of public properties, the investing of public funds, or conducting other specified public business, whenever competitive or bargaining reasons require a closed session.
ROLL CALL VOTE
 - a. Negotiation regarding possible right of way acquisition related to proposed Homestead Acres development.
12. ADJOURN

Closed Session Contemplated: YES

Ellen Skerke, Administrator-Clerk-Treasurer
July 25, 2025

Upon request, reasonable auxiliary aids and services will be provided for disabled individuals. If accommodation is required, please provide adequate advance notice to the Town Clerk at 920-725-0916. A quorum of other Town Commissions/Committees or Sanitary Commissions may attend, but no official action will be taken by them.

Notice was posted on July 25, 2025 at www.townofneenah.com, Town of Neenah Municipal Building, 1600 Breezewood Lane.

TOWN OF NEENAH TOWN BOARD MEETING

July 14, 2025

Regular Meeting held at Town Hall, 1600 Breezewood Lane, Neenah, WI 54956 and offered via Zoom.

Present: Chairman Robert Schmeichel, Supervisor David Bluma, Supervisor Brooke Cardoza, Supervisor James Weiss, and Supervisor Thomas Wilde

Also in Attendance: Jeremy Kwiatkowski, Fire Chief Dan Osero, Deputy Stehli, Winnebago County Sheriff's Department, and Administrator-Clerk-Treasurer Ellen Skerke.

Also in Attendance via Zoom: Carrie Sturn

R. Schmeichel called the meeting to order at 7:00 p.m., Pledge of Allegiance was recited.

Approval of Minutes

Motion: B. Cardoza / D. Bluma to approve June 23, 2025 Town Board Meeting Minutes

T. Wilde offered a couple of typo corrections

Motion carried by voice vote

Public Forum

- None

Public Forum for Recognized Municipal and County Officials

- Deputy Stehli briefly discussed an ongoing neighbor dispute, the Town office is aware of the situation. The Sheriff's office will start to issue disorderly conduct violations.

Correspondences

- Town and Stormwater Budget Status Report as of June 30, 2025
- Building Permit Report – June 2025
- Winnebago County Solid Waste 2024 Financials and 2025 Projected Revenue Reports

Discussion/Action.

Vouchers Payroll and Bank Transactions

Approve Vouchers, Payroll and Bank Transactions July 14, 2025

Motion: B. Cardoza / J. Weiss to approve.

B. Cardoza commented on the invoice for Speedy Clean related to Hunters Point Road and questioned if the same type of work is needed at the curve on South Park Avenue by Adella Beach Road. R. Schmeichel stated this has been discussed in the past. B. Cardoza stated that before it becomes an issue, may want to consider taking action.

Motion Carried by voice vote.

Reports

Report from Fire Chief Dan Osero

- Fire Chief Osero reported on the first half of 2025:
 - The current roster is at 23, including the Fire Chief and Fire Inspector.
 - The Department has responded to 62 32 fire and 30 EMS calls during the first half of 2025. Roughly a 47% decrease from this same time last year.
 - Three members from the Department recently graduated , Quinten Keller and Rick Crouse from the EMR course and Jared Wanta from Fire Fighter I class.
 - Erik Whitman and Eli Simon are attending Firefighter I class that started last week.
 - 9 people will go to school in the Fall.
 - Ride to School program will continue this Fall, the Department will by t-shirts for the students that get the ride.
 - EMS received a \$1,755 grant from Gold Cross Ambulance to purchase supplies.

Voucher List Authorization July 28, 2025

Bank Transfer (Transaction List)

<u>Date</u>	<u>From</u>	<u>To</u>	<u>Amount</u>	<u>Reason</u>
7/29/2025	General MM	Checking	\$ 52,000.00	7-28-2025 Vouchers

Accounts Payable \$ 25,288.05

Notification of New Vendors None

Payroll	Payroll	\$	-
	Expense Reimburse	\$	-
	Gross Payroll	\$	23,800.00
	Net Payroll	\$	21,300.58

Paid via Bank Transfer:

Nationwide:	\$	1,785.04
Federal Tax/Medicare:	\$	1,040.24
State Taxes:	\$	-
Fire Department Expense Reimbursement	\$	2,499.42
	\$	-

Account Balances as of July 29, 2025 after requested transfers per this Voucher List

	PROSPERA CU	Prospera CD	BNY Mellon - Pershing	Total
Checking	\$ 10,168			
Membership account	\$ 5			
General MM	\$ 302,126		\$ 635,062	\$ 937,188
General MM-NAN Fund	\$ 9,523			
Impact Fee	\$ 9,328			
Taxes Collected	\$ 281,503			
Tullar Rd Fund			\$ 42,408	
Storm Water	\$ 535,830	\$ 509,189	\$ 558,120	\$ 1,603,139
CFCU	\$ 529			
TOTAL	\$ 1,149,014	\$ 509,189	\$ 1,235,590	
	GRAND TOTAL	\$	2,893,793	

_____ Schmeichel _____ Bluma _____ Cardoza _____ Weiss _____ Wilde

3:40 PM
07/24/25

Town of Neenah
Check Detail
July 29, 2025

Accounts Payable
\$ 25,288.05

Date	Num	Name	Memo	Account	Paid Amount
07/29/2025	29487	Blimpe Subs		11010-1 · Checking - Prospera (150)	
07/28/2025	July 25		work detail	52210-3 · Fire Dept Supplies and Re...	-65.44
TOTAL					-65.44
07/29/2025	29488	Gannette Wisconsin Local iQ		11010-1 · Checking - Prospera (150)	
07/28/2025	7157414			51422-0 · Alcohol License Expenses	-22.39
TOTAL					-22.39
07/29/2025	29489	JT Schmidt Plumbing		11010-1 · Checking - Prospera (150)	
07/28/2025	11620		Keating	55200-4 · Parks - Water Service	-375.00
07/28/2025	11619		Franzoi	55200-4 · Parks - Water Service	-250.00
07/28/2025	11618		Mahler	55200-4 · Parks - Water Service	-388.94
TOTAL					-1,013.94
07/29/2025	29490	McMahon Associates, Inc		11010-1 · Checking - Prospera (150)	
07/28/2025	939684		prairie extension	55200-8 · Conservancy Park Expense	-1,219.39
				6-54200 · CTH O Pond Maintenance	-244.00
TOTAL					-1,463.39
07/29/2025	29491	TAPCO-Traffic and Parking ...		11010-1 · Checking - Prospera (150)	
07/28/2025	1798491			53314-3 · Hwy -Larsen Rd Reconstru...	-2,500.00
TOTAL					-2,500.00
07/29/2025	29492	Uniform Shoppe, The		11010-1 · Checking - Prospera (150)	
07/28/2025	9723			52210-3 · Fire Dept Supplies and Re...	-423.75
TOTAL					-423.75
07/29/2025	29493	VC3 Inc		11010-1 · Checking - Prospera (150)	
07/28/2025	208871			51420-4 · Office Expenses	-722.00
				52210-3 · Fire Dept Supplies and Re...	-58.00
TOTAL					-780.00
07/29/2025	29494	WE Energies		11010-1 · Checking - Prospera (150)	
07/28/2025	5546630...			55200-7 · Parks - WE Energies	-113.82
				53420-0 · Street Lighting - All Electric	-152.20
				53420-0 · Street Lighting - All Electric	-1,601.16
				55200-8 · Conservancy Park Expense	-378.42
				55200-7 · Parks - WE Energies	-63.92
				51420-8 · MB Utilities	-459.49
				55200-7 · Parks - WE Energies	-40.85
TOTAL					-2,809.86

3:40 PM
07/24/25

Town of Neenah
Check Detail
July 29, 2025

Date	Num	Name	Memo	Account	Paid Amount
07/29/2025	29495	Winnebago Cty. Treasurer		11010-1 · Checking - Prospera (150)	
07/28/2025	31404			6-54500 · SW - Ditch Maintenance, M...	-15,835.98
				53311-2 · Hwy Exp - Maintenance (W...	-288.30
TOTAL					-16,124.28
07/29/2025	29496	Winnebago Liquid Waste	51610-1	11010-1 · Checking - Prospera (150)	
07/28/2025	210813		July 1 2025	51610-1 · Maintenance & Operations	-85.00
TOTAL					-85.00

8:41 AM
07/25/25

Town of Neenah
Check Detail
July 31, 2025

Payroll
Gross = \$23,800.00
Net = \$21,300.58

Date	Num	Name	Memo	Account	Paid Amount
07/31/2025	DD1944	Carter, Willie	Direct Deposit	11010-1 · Checking - Prospera (150)	
			Direct Deposit	52200-0 · Fire Protection - Salaries	-20.00
			Direct Deposit	52200-0 · Fire Protection - Salaries	-25.00
			Direct Deposit	52200-0 · Fire Protection - Salaries	-50.00
			Direct Deposit	52200-0 · Fire Protection - Salaries	-60.00
			Direct Deposit	52200-0 · Fire Protection - Salaries	-60.00
			Direct Deposit	66000 · Nationwide Retirement Expe...	-16.13
			Direct Deposit	21520-0 · Nationwide Payable	16.13
			Direct Deposit	24100-0 · Fire Expense Due	25.00
			Direct Deposit	24100-0 · Fire Expense Due	30.00
			Direct Deposit	24100-0 · Fire Expense Due	47.00
			Direct Deposit	65000 · Medicare Taxes	-3.12
			Direct Deposit	21514-0 · Medicare Taxes Payable	3.12
			Direct Deposit	21514-0 · Medicare Taxes Payable	3.12
			Direct Deposit	2110 · Direct Deposit Liabilities	109.88
TOTAL					0.00
07/31/2025	DD1945	Crouse, Ricky	Direct Deposit	11010-1 · Checking - Prospera (150)	
			Direct Deposit	52200-0 · Fire Protection - Salaries	-135.00
			Direct Deposit	52200-0 · Fire Protection - Salaries	-150.00
			Direct Deposit	52200-0 · Fire Protection - Salaries	-50.00
			Direct Deposit	52200-0 · Fire Protection - Salaries	-100.00
			Direct Deposit	52200-0 · Fire Protection - Salaries	-82.50
			Direct Deposit	52200-0 · Fire Protection - Salaries	-20.00
			Direct Deposit	52300-0 · Fire Dept. First Resp- Salary	-20.00
			Direct Deposit	52200-0 · Fire Protection - Salaries	-125.00
			Direct Deposit	66000 · Nationwide Retirement Expe...	-51.19
			Direct Deposit	21520-0 · Nationwide Payable	51.19
			Direct Deposit	24100-0 · Fire Expense Due	25.00
			Direct Deposit	24100-0 · Fire Expense Due	30.00
			Direct Deposit	24100-0 · Fire Expense Due	65.00
			Direct Deposit	65000 · Medicare Taxes	-9.90
			Direct Deposit	21514-0 · Medicare Taxes Payable	9.90
			Direct Deposit	21514-0 · Medicare Taxes Payable	9.90
			Direct Deposit	2110 · Direct Deposit Liabilities	552.60
TOTAL					0.00
07/31/2025	DD1966	Crouse, Ricky	Direct Deposit	11010-1 · Checking - Prospera (150)	
			Direct Deposit	52200-0 · Fire Protection - Salaries	-720.00
			Direct Deposit	66000 · Nationwide Retirement Expe...	-54.00
			Direct Deposit	21520-0 · Nationwide Payable	54.00
			Direct Deposit	65000 · Medicare Taxes	-10.44
			Direct Deposit	21514-0 · Medicare Taxes Payable	10.44
			Direct Deposit	21514-0 · Medicare Taxes Payable	10.44
			Direct Deposit	2110 · Direct Deposit Liabilities	709.56
TOTAL					0.00

8:41 AM

07/25/25

Town of Neenah

Check Detail

July 31, 2025

Date	Num	Name	Memo	Account	Paid Amount
07/31/2025	DD1946	Dahlberg, Andrew	Direct Deposit	11010-1 · Checking - Prospera (150)	
			Direct Deposit	52200-0 · Fire Protection - Salaries	-262.50
			Direct Deposit	52200-0 · Fire Protection - Salaries	-100.00
			Direct Deposit	52200-0 · Fire Protection - Salaries	-125.00
			Direct Deposit	52200-0 · Fire Protection - Salaries	-25.00
			Direct Deposit	52200-0 · Fire Protection - Salaries	-22.50
			Direct Deposit	52200-0 · Fire Protection - Salaries	-60.00
			Direct Deposit	52300-0 · Fire Dept. First Resp- Salary	-275.00
			Direct Deposit	52300-0 · Fire Dept. First Resp- Salary	-60.00
			Direct Deposit	52200-0 · Fire Protection - Salaries	-125.00
			Direct Deposit	66000 · Nationwide Retirement Expe...	-79.13
			Direct Deposit	21520-0 · Nationwide Payable	79.13
			Direct Deposit	24100-0 · Fire Expense Due	25.00
			Direct Deposit	24100-0 · Fire Expense Due	30.00
			Direct Deposit	24100-0 · Fire Expense Due	73.00
			Direct Deposit	65000 · Medicare Taxes	-15.30
			Direct Deposit	21514-0 · Medicare Taxes Payable	15.30
			Direct Deposit	21514-0 · Medicare Taxes Payable	15.30
			Direct Deposit	2110 · Direct Deposit Liabilities	911.70
TOTAL					0.00
07/31/2025	DD1947	Dorton, Nickolas	Direct Deposit	11010-1 · Checking - Prospera (150)	
			Direct Deposit	52200-0 · Fire Protection - Salaries	-312.50
			Direct Deposit	52200-0 · Fire Protection - Salaries	-125.00
			Direct Deposit	52200-0 · Fire Protection - Salaries	-150.00
			Direct Deposit	52200-0 · Fire Protection - Salaries	-50.00
			Direct Deposit	52200-0 · Fire Protection - Salaries	-37.50
			Direct Deposit	52200-0 · Fire Protection - Salaries	-70.00
			Direct Deposit	52300-0 · Fire Dept. First Resp- Salary	-225.00
			Direct Deposit	52300-0 · Fire Dept. First Resp- Salary	-40.00
			Direct Deposit	52200-0 · Fire Protection - Salaries	-150.00
			Direct Deposit	66000 · Nationwide Retirement Expe...	-87.00
			Direct Deposit	21520-0 · Nationwide Payable	87.00
			Direct Deposit	24100-0 · Fire Expense Due	25.00
			Direct Deposit	24100-0 · Fire Expense Due	30.00
			Direct Deposit	24100-0 · Fire Expense Due	158.00
			Direct Deposit	65000 · Medicare Taxes	-16.82
			Direct Deposit	21514-0 · Medicare Taxes Payable	16.82
			Direct Deposit	21514-0 · Medicare Taxes Payable	16.82
			Direct Deposit	2110 · Direct Deposit Liabilities	930.18
TOTAL					0.00
07/31/2025	DD1948	Fitzgerald, Riley	Direct Deposit	11010-1 · Checking - Prospera (150)	
			Direct Deposit	52200-0 · Fire Protection - Salaries	-80.00
			Direct Deposit	52200-0 · Fire Protection - Salaries	-125.00
			Direct Deposit	52200-0 · Fire Protection - Salaries	-100.00
			Direct Deposit	52200-0 · Fire Protection - Salaries	-50.00
			Direct Deposit	52200-0 · Fire Protection - Salaries	-90.00
			Direct Deposit	52200-0 · Fire Protection - Salaries	-20.00
			Direct Deposit	66000 · Nationwide Retirement Expe...	-34.88
			Direct Deposit	21520-0 · Nationwide Payable	34.88
			Direct Deposit	24100-0 · Fire Expense Due	25.00
			Direct Deposit	24100-0 · Fire Expense Due	30.00
			Direct Deposit	24100-0 · Fire Expense Due	43.00
			Direct Deposit	65000 · Medicare Taxes	-6.74
			Direct Deposit	21514-0 · Medicare Taxes Payable	6.74
			Direct Deposit	21514-0 · Medicare Taxes Payable	6.74
			Direct Deposit	2110 · Direct Deposit Liabilities	360.26
TOTAL					0.00

8:41 AM
07/25/25

Town of Neenah
Check Detail
July 31, 2025

Date	Num	Name	Memo	Account	Paid Amount
07/31/2025	DD1949	Keller, Quinten	Direct Deposit	11010-1 · Checking - Prospera (150)	
			Direct Deposit	52200-0 · Fire Protection - Salaries	-517.50
			Direct Deposit	52200-0 · Fire Protection - Salaries	-125.00
			Direct Deposit	52200-0 · Fire Protection - Salaries	-100.00
			Direct Deposit	52200-0 · Fire Protection - Salaries	-50.00
			Direct Deposit	52200-0 · Fire Protection - Salaries	-142.50
			Direct Deposit	52200-0 · Fire Protection - Salaries	-60.00
			Direct Deposit	66000 · Nationwide Retirement Expe...	-74.63
			Direct Deposit	21520-0 · Nationwide Payable	74.63
			Direct Deposit	24100-0 · Fire Expense Due	25.00
			Direct Deposit	24100-0 · Fire Expense Due	30.00
			Direct Deposit	24100-0 · Fire Expense Due	112.50
			Direct Deposit	65000 · Medicare Taxes	-14.43
			Direct Deposit	21514-0 · Medicare Taxes Payable	14.43
			Direct Deposit	21514-0 · Medicare Taxes Payable	14.43
			Direct Deposit	2110 · Direct Deposit Liabilities	813.07
TOTAL					0.00
07/31/2025	DD1967	Keller, Quinten	Direct Deposit	11010-1 · Checking - Prospera (150)	
			Direct Deposit	52200-0 · Fire Protection - Salaries	-720.00
			Direct Deposit	66000 · Nationwide Retirement Expe...	-54.00
			Direct Deposit	21520-0 · Nationwide Payable	54.00
			Direct Deposit	65000 · Medicare Taxes	-10.43
			Direct Deposit	21514-0 · Medicare Taxes Payable	10.43
			Direct Deposit	21514-0 · Medicare Taxes Payable	10.43
			Direct Deposit	2110 · Direct Deposit Liabilities	709.57
TOTAL					0.00
07/31/2025	DD1950	Lloyd, Ayden	Direct Deposit	11010-1 · Checking - Prospera (150)	
			Direct Deposit	52200-0 · Fire Protection - Salaries	-107.50
			Direct Deposit	52200-0 · Fire Protection - Salaries	-125.00
			Direct Deposit	52200-0 · Fire Protection - Salaries	-100.00
			Direct Deposit	52200-0 · Fire Protection - Salaries	-50.00
			Direct Deposit	52200-0 · Fire Protection - Salaries	-52.50
			Direct Deposit	52300-0 · Fire Dept. First Resp- Salary	-25.00
			Direct Deposit	52300-0 · Fire Dept. First Resp- Salary	-40.00
			Direct Deposit	66000 · Nationwide Retirement Expe...	-37.50
			Direct Deposit	21520-0 · Nationwide Payable	37.50
			Direct Deposit	24100-0 · Fire Expense Due	25.00
			Direct Deposit	24100-0 · Fire Expense Due	30.00
			Direct Deposit	24100-0 · Fire Expense Due	58.50
			Direct Deposit	65000 · Medicare Taxes	-7.25
			Direct Deposit	21514-0 · Medicare Taxes Payable	7.25
			Direct Deposit	21514-0 · Medicare Taxes Payable	7.25
			Direct Deposit	2110 · Direct Deposit Liabilities	379.25
TOTAL					0.00

8:41 AM
07/25/25

Town of Neenah
Check Detail
July 31, 2025

Date	Num	Name	Memo	Account	Paid Amount
07/31/2025	DD1951	Lloyd, Irik M	Direct Deposit	11010-1 · Checking - Prospera (150)	
			Direct Deposit	52200-0 · Fire Protection - Salaries	-287.50
			Direct Deposit	52200-0 · Fire Protection - Salaries	-200.00
			Direct Deposit	52200-0 · Fire Protection - Salaries	-125.00
			Direct Deposit	52200-0 · Fire Protection - Salaries	-25.00
			Direct Deposit	52200-0 · Fire Protection - Salaries	-90.00
			Direct Deposit	52200-0 · Fire Protection - Salaries	-265.00
			Direct Deposit	52200-0 · Fire Protection - Salaries	-375.00
			Direct Deposit	52300-0 · Fire Dept. First Resp- Salary	-275.00
			Direct Deposit	52300-0 · Fire Dept. First Resp- Salary	-60.00
			Direct Deposit	66000 · Nationwide Retirement Expe...	-127.69
			Direct Deposit	21520-0 · Nationwide Payable	127.69
			Direct Deposit	24100-0 · Fire Expense Due	25.00
			Direct Deposit	24100-0 · Fire Expense Due	30.00
			Direct Deposit	65000 · Medicare Taxes	-24.69
			Direct Deposit	21514-0 · Medicare Taxes Payable	24.69
			Direct Deposit	21514-0 · Medicare Taxes Payable	24.69
			Direct Deposit	2110 · Direct Deposit Liabilities	1,622.81
TOTAL					0.00
07/31/2025	DD1952	Lontcoski, Joseph	Direct Deposit	11010-1 · Checking - Prospera (150)	
			Direct Deposit	52200-0 · Fire Protection - Salaries	-620.00
			Direct Deposit	52200-0 · Fire Protection - Salaries	-175.00
			Direct Deposit	52200-0 · Fire Protection - Salaries	-150.00
			Direct Deposit	52200-0 · Fire Protection - Salaries	-75.00
			Direct Deposit	52200-0 · Fire Protection - Salaries	-285.00
			Direct Deposit	52200-0 · Fire Protection - Salaries	-20.00
			Direct Deposit	52300-0 · Fire Dept. First Resp- Salary	-675.00
			Direct Deposit	52300-0 · Fire Dept. First Resp- Salary	-60.00
			Direct Deposit	66000 · Nationwide Retirement Expe...	-154.50
			Direct Deposit	21520-0 · Nationwide Payable	154.50
			Direct Deposit	24100-0 · Fire Expense Due	25.00
			Direct Deposit	24100-0 · Fire Expense Due	30.00
			Direct Deposit	24100-0 · Fire Expense Due	56.00
			Direct Deposit	65000 · Medicare Taxes	-29.87
			Direct Deposit	21514-0 · Medicare Taxes Payable	29.87
			Direct Deposit	21514-0 · Medicare Taxes Payable	29.87
			Direct Deposit	2110 · Direct Deposit Liabilities	1,919.13
TOTAL					0.00
07/31/2025	DD1953	McArthur, James	Direct Deposit	11010-1 · Checking - Prospera (150)	
			Direct Deposit	52200-0 · Fire Protection - Salaries	-255.00
			Direct Deposit	52200-0 · Fire Protection - Salaries	-150.00
			Direct Deposit	52200-0 · Fire Protection - Salaries	-50.00
			Direct Deposit	52200-0 · Fire Protection - Salaries	-25.00
			Direct Deposit	52200-0 · Fire Protection - Salaries	-45.00
			Direct Deposit	52200-0 · Fire Protection - Salaries	-277.50
			Direct Deposit	52200-0 · Fire Protection - Salaries	-150.00
			Direct Deposit	52200-0 · Fire Protection - Salaries	-80.00
			Direct Deposit	66000 · Nationwide Retirement Expe...	-77.44
			Direct Deposit	21520-0 · Nationwide Payable	77.44
			Direct Deposit	24100-0 · Fire Expense Due	25.00
			Direct Deposit	24100-0 · Fire Expense Due	30.00
			Direct Deposit	65000 · Medicare Taxes	-14.97
			Direct Deposit	21514-0 · Medicare Taxes Payable	14.97
			Direct Deposit	21514-0 · Medicare Taxes Payable	14.97
			Direct Deposit	2110 · Direct Deposit Liabilities	962.53
TOTAL					0.00

8:41 AM
07/25/25

Town of Neenah
Check Detail
July 31, 2025

Date	Num	Name	Memo	Account	Paid Amount
07/31/2025	DD1954	Muttart, Nathan R.	Direct Deposit	11010-1 · Checking - Prospera (150)	
			Direct Deposit	52200-0 · Fire Protection - Salaries	-562.50
			Direct Deposit	52200-0 · Fire Protection - Salaries	-200.00
			Direct Deposit	52200-0 · Fire Protection - Salaries	-150.00
			Direct Deposit	52200-0 · Fire Protection - Salaries	-75.00
			Direct Deposit	52200-0 · Fire Protection - Salaries	-20.00
			Direct Deposit	52200-0 · Fire Protection - Salaries	-457.50
			Direct Deposit	66000 · Nationwide Retirement Expe...	-109.88
			Direct Deposit	21520-0 · Nationwide Payable	109.88
			Direct Deposit	24100-0 · Fire Expense Due	25.00
			Direct Deposit	24100-0 · Fire Expense Due	30.00
			Direct Deposit	24100-0 · Fire Expense Due	176.00
			Direct Deposit	65000 · Medicare Taxes	-21.24
			Direct Deposit	21514-0 · Medicare Taxes Payable	21.24
			Direct Deposit	21514-0 · Medicare Taxes Payable	21.24
			Direct Deposit	2110 · Direct Deposit Liabilities	1,212.76
TOTAL					0.00
07/31/2025	DD1955	Osero, Daniel W.	Direct Deposit	11010-1 · Checking - Prospera (150)	
			Direct Deposit	52200-0 · Fire Protection - Salaries	-600.00
			Direct Deposit	52200-0 · Fire Protection - Salaries	-200.00
			Direct Deposit	52200-0 · Fire Protection - Salaries	-150.00
			Direct Deposit	52200-0 · Fire Protection - Salaries	-1,155.00
			Direct Deposit	52200-0 · Fire Protection - Salaries	-200.00
			Direct Deposit	52200-0 · Fire Protection - Salaries	-295.00
			Direct Deposit	52300-0 · Fire Dept. First Resp- Salary	-300.00
			Direct Deposit	52300-0 · Fire Dept. First Resp- Salary	-40.00
			Direct Deposit	66000 · Nationwide Retirement Expe...	-220.50
			Direct Deposit	21520-0 · Nationwide Payable	220.50
			Direct Deposit	24100-0 · Fire Expense Due	25.00
			Direct Deposit	24100-0 · Fire Expense Due	30.00
			Direct Deposit	24100-0 · Fire Expense Due	98.00
			Direct Deposit	65000 · Medicare Taxes	-42.63
			Direct Deposit	21514-0 · Medicare Taxes Payable	42.63
			Direct Deposit	21514-0 · Medicare Taxes Payable	42.63
			Direct Deposit	2110 · Direct Deposit Liabilities	2,744.37
TOTAL					0.00
07/31/2025	DD1956	Pleshek, Cynthia	Direct Deposit	11010-1 · Checking - Prospera (150)	
			Direct Deposit	52200-0 · Fire Protection - Salaries	-75.00
			Direct Deposit	52200-0 · Fire Protection - Salaries	-495.00
			Direct Deposit	52300-0 · Fire Dept. First Resp- Salary	-20.00
			Direct Deposit	66000 · Nationwide Retirement Expe...	-44.25
			Direct Deposit	21520-0 · Nationwide Payable	44.25
			Direct Deposit	24100-0 · Fire Expense Due	25.00
			Direct Deposit	24100-0 · Fire Expense Due	30.00
			Direct Deposit	65000 · Medicare Taxes	-8.56
			Direct Deposit	21514-0 · Medicare Taxes Payable	8.56
			Direct Deposit	21514-0 · Medicare Taxes Payable	8.56
			Direct Deposit	2110 · Direct Deposit Liabilities	526.44
TOTAL					0.00

8:41 AM
07/25/25

Town of Neenah
Check Detail
July 31, 2025

Date	Num	Name	Memo	Account	Paid Amount
07/31/2025	DD1957	Plier, Christopher J.	Direct Deposit	11010-1 · Checking - Prospera (150)	
			Direct Deposit	52200-0 · Fire Protection - Salaries	-465.00
			Direct Deposit	52200-0 · Fire Protection - Salaries	-150.00
			Direct Deposit	52200-0 · Fire Protection - Salaries	-150.00
			Direct Deposit	52200-0 · Fire Protection - Salaries	-750.00
			Direct Deposit	52200-0 · Fire Protection - Salaries	-170.00
			Direct Deposit	52300-0 · Fire Dept. First Resp- Salary	-300.00
			Direct Deposit	52200-0 · Fire Protection - Salaries	-45.00
			Direct Deposit	52300-0 · Fire Dept. First Resp- Salary	-60.00
			Direct Deposit	66000 · Nationwide Retirement Expe...	-156.75
			Direct Deposit	21520-0 · Nationwide Payable	156.75
			Direct Deposit	24100-0 · Fire Expense Due	25.00
			Direct Deposit	24100-0 · Fire Expense Due	30.00
			Direct Deposit	24100-0 · Fire Expense Due	84.50
			Direct Deposit	24000-0 · Payroll Liabilities	350.00
			Direct Deposit	65000 · Medicare Taxes	-30.31
			Direct Deposit	21514-0 · Medicare Taxes Payable	30.31
			Direct Deposit	21514-0 · Medicare Taxes Payable	30.31
			Direct Deposit	2110 · Direct Deposit Liabilities	1,570.19
TOTAL					0.00
07/31/2025	DD1958	Schmeichel, Matthew A	Direct Deposit	11010-1 · Checking - Prospera (150)	
			Direct Deposit	52200-0 · Fire Protection - Salaries	-282.50
			Direct Deposit	52200-0 · Fire Protection - Salaries	-150.00
			Direct Deposit	52200-0 · Fire Protection - Salaries	-125.00
			Direct Deposit	52200-0 · Fire Protection - Salaries	-50.00
			Direct Deposit	52200-0 · Fire Protection - Salaries	-105.00
			Direct Deposit	52200-0 · Fire Protection - Salaries	-20.00
			Direct Deposit	66000 · Nationwide Retirement Expe...	-54.94
			Direct Deposit	21520-0 · Nationwide Payable	54.94
			Direct Deposit	24100-0 · Fire Expense Due	25.00
			Direct Deposit	24100-0 · Fire Expense Due	30.00
			Direct Deposit	65000 · Medicare Taxes	-10.62
			Direct Deposit	21514-0 · Medicare Taxes Payable	10.62
			Direct Deposit	21514-0 · Medicare Taxes Payable	10.62
			Direct Deposit	2110 · Direct Deposit Liabilities	666.88
TOTAL					0.00
07/31/2025	DD1959	Schultz, Henry P	Direct Deposit	11010-1 · Checking - Prospera (150)	
			Direct Deposit	52200-0 · Fire Protection - Salaries	-75.00
			Direct Deposit	52200-0 · Fire Protection - Salaries	-100.00
			Direct Deposit	52200-0 · Fire Protection - Salaries	-75.00
			Direct Deposit	52200-0 · Fire Protection - Salaries	-25.00
			Direct Deposit	52200-0 · Fire Protection - Salaries	-52.50
			Direct Deposit	52200-0 · Fire Protection - Salaries	-20.00
			Direct Deposit	52200-0 · Fire Protection - Salaries	-150.00
			Direct Deposit	52300-0 · Fire Dept. First Resp- Salary	-50.00
			Direct Deposit	52300-0 · Fire Dept. First Resp- Salary	-20.00
			Direct Deposit	66000 · Nationwide Retirement Expe...	-42.56
			Direct Deposit	21520-0 · Nationwide Payable	42.56
			Direct Deposit	24100-0 · Fire Expense Due	25.00
			Direct Deposit	24100-0 · Fire Expense Due	30.00
			Direct Deposit	24100-0 · Fire Expense Due	27.00
			Direct Deposit	65000 · Medicare Taxes	-8.23
			Direct Deposit	21514-0 · Medicare Taxes Payable	8.23
			Direct Deposit	21514-0 · Medicare Taxes Payable	8.23
			Direct Deposit	2110 · Direct Deposit Liabilities	477.27
TOTAL					0.00

8:41 AM
07/25/25

Town of Neenah
Check Detail
July 31, 2025

Date	Num	Name	Memo	Account	Paid Amount
07/31/2025	DD1960	Simington, Nathan S	Direct Deposit	11010-1 · Checking - Prospera (150)	
			Direct Deposit	52200-0 · Fire Protection - Salaries	-435.00
			Direct Deposit	52200-0 · Fire Protection - Salaries	-200.00
			Direct Deposit	52200-0 · Fire Protection - Salaries	-150.00
			Direct Deposit	52200-0 · Fire Protection - Salaries	-25.00
			Direct Deposit	52200-0 · Fire Protection - Salaries	-225.00
			Direct Deposit	52200-0 · Fire Protection - Salaries	-190.00
			Direct Deposit	52200-0 · Fire Protection - Salaries	-375.00
			Direct Deposit	52300-0 · Fire Dept. First Resp- Salary	-150.00
			Direct Deposit	52300-0 · Fire Dept. First Resp- Salary	-40.00
			Direct Deposit	66000 · Nationwide Retirement Expe...	-134.25
			Direct Deposit	21520-0 · Nationwide Payable	134.25
			Direct Deposit	24100-0 · Fire Expense Due	25.00
			Direct Deposit	24100-0 · Fire Expense Due	30.00
			Direct Deposit	65000 · Medicare Taxes	-25.96
			Direct Deposit	21514-0 · Medicare Taxes Payable	25.96
			Direct Deposit	21514-0 · Medicare Taxes Payable	25.96
			Direct Deposit	2110 · Direct Deposit Liabilities	1,709.04
TOTAL					0.00
07/31/2025	DD1961	Simon, Eli J	Direct Deposit	11010-1 · Checking - Prospera (150)	
			Direct Deposit	52200-0 · Fire Protection - Salaries	-20.00
			Direct Deposit	52200-0 · Fire Protection - Salaries	-75.00
			Direct Deposit	52200-0 · Fire Protection - Salaries	-50.00
			Direct Deposit	66000 · Nationwide Retirement Expe...	-10.88
			Direct Deposit	21520-0 · Nationwide Payable	10.88
			Direct Deposit	24100-0 · Fire Expense Due	25.00
			Direct Deposit	24100-0 · Fire Expense Due	30.00
			Direct Deposit	24100-0 · Fire Expense Due	47.00
			Direct Deposit	65000 · Medicare Taxes	-2.10
			Direct Deposit	21514-0 · Medicare Taxes Payable	2.10
			Direct Deposit	21514-0 · Medicare Taxes Payable	2.10
			Direct Deposit	2110 · Direct Deposit Liabilities	40.90
TOTAL					0.00
07/31/2025	DD1962	Tunstall, Randy	Direct Deposit	11010-1 · Checking - Prospera (150)	
			Direct Deposit	52200-0 · Fire Protection - Salaries	-187.50
			Direct Deposit	52200-0 · Fire Protection - Salaries	-175.00
			Direct Deposit	52200-0 · Fire Protection - Salaries	-100.00
			Direct Deposit	52200-0 · Fire Protection - Salaries	-50.00
			Direct Deposit	52200-0 · Fire Protection - Salaries	-30.00
			Direct Deposit	52200-0 · Fire Protection - Salaries	-60.00
			Direct Deposit	66000 · Nationwide Retirement Expe...	-45.19
			Direct Deposit	21520-0 · Nationwide Payable	45.19
			Direct Deposit	24100-0 · Fire Expense Due	25.00
			Direct Deposit	24100-0 · Fire Expense Due	30.00
			Direct Deposit	24100-0 · Fire Expense Due	99.50
			Direct Deposit	65000 · Medicare Taxes	-8.74
			Direct Deposit	21514-0 · Medicare Taxes Payable	8.74
			Direct Deposit	21514-0 · Medicare Taxes Payable	8.74
			Direct Deposit	2110 · Direct Deposit Liabilities	439.26
TOTAL					0.00

8:41 AM

07/25/25

Town of Neenah

Check Detail

July 31, 2025

Date	Num	Name	Memo	Account	Paid Amount
07/31/2025	DD1963	Wanta, Jared J	Direct Deposit	11010-1 · Checking - Prospera (150)	
			Direct Deposit	52200-0 · Fire Protection - Salaries	-20.00
			Direct Deposit	52200-0 · Fire Protection - Salaries	-50.00
			Direct Deposit	52200-0 · Fire Protection - Salaries	-25.00
			Direct Deposit	52200-0 · Fire Protection - Salaries	-25.00
			Direct Deposit	52200-0 · Fire Protection - Salaries	-67.50
			Direct Deposit	66000 · Nationwide Retirement Expe...	-14.06
			Direct Deposit	21520-0 · Nationwide Payable	14.06
			Direct Deposit	24100-0 · Fire Expense Due	25.00
			Direct Deposit	24100-0 · Fire Expense Due	30.00
			Direct Deposit	24100-0 · Fire Expense Due	113.00
			Direct Deposit	65000 · Medicare Taxes	-2.72
			Direct Deposit	21514-0 · Medicare Taxes Payable	2.72
			Direct Deposit	21514-0 · Medicare Taxes Payable	2.72
			Direct Deposit	2110 · Direct Deposit Liabilities	16.78
TOTAL					0.00
07/31/2025	DD1964	Weiss, David M.	Direct Deposit	11010-1 · Checking - Prospera (150)	
			Direct Deposit	52200-0 · Fire Protection - Salaries	-20.00
			Direct Deposit	52200-0 · Fire Protection - Salaries	-20.00
			Direct Deposit	66000 · Nationwide Retirement Expe...	-3.00
			Direct Deposit	21520-0 · Nationwide Payable	3.00
			Direct Deposit	24100-0 · Fire Expense Due	9.42
			Direct Deposit	24100-0 · Fire Expense Due	30.00
			Direct Deposit	65000 · Medicare Taxes	-0.58
			Direct Deposit	21514-0 · Medicare Taxes Payable	0.58
			Direct Deposit	21514-0 · Medicare Taxes Payable	0.58
TOTAL					0.00
07/31/2025	DD1965	Whitman, Erik	Direct Deposit	11010-1 · Checking - Prospera (150)	
			Direct Deposit	52200-0 · Fire Protection - Salaries	-25.00
			Direct Deposit	52200-0 · Fire Protection - Salaries	-25.00
			Direct Deposit	52200-0 · Fire Protection - Salaries	-25.00
			Direct Deposit	52200-0 · Fire Protection - Salaries	-67.50
			Direct Deposit	66000 · Nationwide Retirement Expe...	-10.69
			Direct Deposit	21520-0 · Nationwide Payable	10.69
			Direct Deposit	24100-0 · Fire Expense Due	25.00
			Direct Deposit	24100-0 · Fire Expense Due	30.00
			Direct Deposit	24100-0 · Fire Expense Due	47.00
			Direct Deposit	65000 · Medicare Taxes	-2.07
			Direct Deposit	21514-0 · Medicare Taxes Payable	2.07
			Direct Deposit	21514-0 · Medicare Taxes Payable	2.07
			Direct Deposit	2110 · Direct Deposit Liabilities	38.43
TOTAL					0.00

9:09 AM

07/25/25

Town of Neenah
Payroll Transaction Detail
 July 29 - 31, 2025

Nationwide
\$ 1785.04

Date	Num	Type	Source Name	Payroll Item	Wage Base	Amount
07/31/25	DD...	Paycheck	Carter, Willie	Nationwide Retire...	0.00	-16.13
						-16.13
07/31/25	DD...	Paycheck	Crouse, Ricky	Nationwide Retire...	0.00	-51.19
						-51.19
07/31/25	DD...	Paycheck	Crouse, Ricky	Nationwide Retire...	0.00	-54.00
						-54.00
07/31/25	DD...	Paycheck	Dahlberg, Andrew	Nationwide Retire...	0.00	-79.13
						-79.13
07/31/25	DD...	Paycheck	Dorton, Nickolas	Nationwide Retire...	0.00	-87.00
						-87.00
07/31/25	DD...	Paycheck	Fitzgerald, Riley	Nationwide Retire...	0.00	-34.88
						-34.88
07/31/25	DD...	Paycheck	Keller, Quinten	Nationwide Retire...	0.00	-74.63
						-74.63
07/31/25	DD...	Paycheck	Keller, Quinten	Nationwide Retire...	0.00	-54.00
						-54.00
07/31/25	DD...	Paycheck	Lloyd, Ayden	Nationwide Retire...	0.00	-37.50
						-37.50
07/31/25	DD...	Paycheck	Lloyd, Irík M	Nationwide Retire...	0.00	-127.69
						-127.69
07/31/25	DD...	Paycheck	Lontcoski, Joseph	Nationwide Retire...	0.00	-154.50
						-154.50
07/31/25	DD...	Paycheck	McArthur, James	Nationwide Retire...	0.00	-77.44
						-77.44
07/31/25	DD...	Paycheck	Muttart, Nathan R.	Nationwide Retire...	0.00	-109.88
						-109.88
07/31/25	DD...	Paycheck	Osero, Daniel W.	Nationwide Retire...	0.00	-220.50
						-220.50
07/31/25	DD...	Paycheck	Pleshek, Cynthia	Nationwide Retire...	0.00	-44.25
						-44.25
07/31/25	DD...	Paycheck	Plier, Christopher J.	Nationwide Retire...	0.00	-156.75
						-156.75
07/31/25	DD...	Paycheck	Schmeichel, Matthew A	Nationwide Retire...	0.00	-54.94
						-54.94
07/31/25	DD...	Paycheck	Schultz, Henry P	Nationwide Retire...	0.00	-42.56
						-42.56
07/31/25	DD...	Paycheck	Simington, Nathan S	Nationwide Retire...	0.00	-134.25
						-134.25

9:09 AM

07/25/25

Town of Neenah
Payroll Transaction Detail
July 29 - 31, 2025

Date	Num	Type	Source Name	Payroll Item	Wage Base	Amount
07/31/25	DD...	Paycheck	Simon, Eli J	Nationwide Retire...	0.00	-10.88
						-10.88
07/31/25	DD...	Paycheck	Tunstall, Randy	Nationwide Retire...	0.00	-45.19
						-45.19
07/31/25	DD...	Paycheck	Wanta, Jared J	Nationwide Retire...	0.00	-14.06
						-14.06
07/30/25	DD...	Paycheck	Wanta, Jared J	Nationwide Retire...	0.00	-90.00
						-90.00
07/31/25	DD...	Paycheck	Weiss, David M.	Nationwide Retire...	0.00	-3.00
						-3.00
07/31/25	DD...	Paycheck	Whitman, Erik	Nationwide Retire...	0.00	-10.69
						-10.69
TOTAL						-1,785.04

9:14 AM

07/25/25

Town of Neenah
Payroll Liability Balances
July 2025

Taxes Payable

\$ 1040.24

	<u>BALANCE</u>
Payroll Liabilities	
Federal Withholding	350.00
Medicare Employee	345.12
Medicare Company	345.12
WI - Withholding	0.00
Medicare Employee Addl Tax	0.00
	<hr/>
Total Payroll Liabilities	<u><u>1,040.24</u></u>

3:34 PM

07/24/25

Town of Neenah
Payroll Liability Balances
July 2025

Fire Expense

Deduction \$2,499.42

	BALANCE
Payroll Liabilities	
Fireman Expenses	2,499.42
Total Payroll Liabilities	2,499.42

TOWN OF NEENAH PLAN COMMISSION MEETING

Monday, July 17, 2025

Held at Town of Neenah Municipal Building, 1600 Breezewood Lane and offered via Zoom.

Present for Plan Commission: Plan Commission Chair Jody Andres, Commissioner Chris Anderson, Commissioner Brett Armstrong, Commissioner Jeremy Kwiatkowski, Commissioner Brandon Nielsen, , and Commissioner Pete Weyenberg.

Excused: Commissioner Russ Meerdink

Also Present: Brian Stedl, Chad Wistow, Scott Anderson (Davel Engineering), Chris Baldwin, Terri Baldwin, Tyler Claringbole, Max Ogden, Jeff Ogden, Town Supervisor David Bluma, Town Supervisor James Weiss, Town Supervisor Thomas Wilde, and Administrator-Clerk-Treasurer Ellen Skerke.

Also Present Via Zoom: Carrie Sturn and Town Chairman Robert Schmeichel

J. Andres called the meeting to order at 7:00 p.m. Pledge of Allegiance was recited.

Public Forum

- Chris Baldwin, 1575 Oakridge Road voiced his concerns regarding the CSM,
 - Town of Neenah website states Urban Living in a Rural Setting, which is why he and his wife purchased their property.
 - Purchased their property in 2006, he referred to a letter dated 2000 between Judy Grimes and Town of Neenah talking about the land and future development which would stay consistent with the area's residential and current lot size.
 - Starting in 2010, they have contacted the Town expressing their interest in buying land to the east and north of their property. In 2015 they provided a formal offer. And each year thereafter have let the Town know that they are interested in buying some of the land.
 - Over the last 23 years, they have attended Town Board meetings and Plan commission meetings and have voted against the sale of land specifically because of the talk of putting a road next to their home.
 - Their understanding is the Town bought the land with taxpayer money to be a barrier between the Town and City. They do not understand why the Town recently decided to sell the property.
 - They bought property in this area specifically because of the rural setting. The future road will be right next to their master bedroom and well. Their privacy will be disrupted, with noise and light pollution. The trees and brush that provide a natural barrier will be removed
 - The Town had presented an option to give them 1.3 acres of land to allow the sale to go through, They were under the impression that the Town, Ogdens and themselves would work together as a group. That never occurred.
 - Having their attorney is not meant to threaten anyone, they feel more comfortable having an attorney to support their interests.
 - They want more information about why the Town is getting rid of the buffer area, why selling to be industrialized, why aren't other options considered for money. Why does the road need to go in right next to their property? There are already two other access points. Why is Oakridge Road being redone,
 - They do not understand why this road is needed if the roundabout is meant to relieve congestion, will the roundabout bring more lights, more stop signs ?

- The Town and Ogdens have listened to their concerns, but they have not been included in the decisions that are affecting their property.
- They are confused how all this can happen, contracts signed and a CSM created without going through the Plan Commission.
- Terri Baldwin, 1575 Oakridge Road voiced her concerns regarding the CSM,
 - They have a lot of concerns and there are a lot of unknowns, why is the road being put in right next to their property, why does it need to cross Oakridge, where is it going?
 - They are still willing to work with the Town and Ogdens to discuss options
- Tyler Claringbole, Lawyer and shareholder at Herling Clark Law Firm.
 - He is here tonight to support his clients. He was not brought into this issue until very late in the game. Baldwins are not trying to cause trouble, they want to know their rights, options and how to work together to come up with a solution to the problem.
 - Baldwins would like to preserve their privacy and intimacy in their rural backyard.
 - Baldwins want to be heard, they want to feel like they are involved in the process and want to protect their home and their rural setting.
 - Hoping the three parties can come up with a solution to the problem

Approve June 16 , 2025 Plan Commission Meeting Minutes

Motion: P. Weyenberg/ C. Anderson to approve

J. Kwiatkowski provided corrections of a few typos.

Motion carried by voice vote.

Input/Discussion/Action**Certified Survey Map**

Resolution 2025-13 – Certified Survey Map

Applicant: Town of Neenah

Agent: Davel Engineering

Location of Premises Affected: 1573 Oakridge Rd

Tax Parcel No: 010-02180603 and 010-021808

Motion: P. Weyenberg / B. Nielsen to take this item off the table from the previous Plan Commission Meeting.

Motion carried by voice vote

- J. Andres noted the easement language as requested at the previous meeting is in the Plan Commission packet. The Plan Commission is tasked with making a recommendation to the Town Board on the merits of the CSM, does it meet the Town Development Ordinance.
- B. Nielsen asked what changed from the previous CMS.
- S. Anderson, Davel Engineering commented that there are minor changes, the original CSM did not dedicate County Road O and portion of Oakridge Road. This CSM is revised to dedicate those areas. The easement language was revised to show two separate easements, 33-foot easement on Lot1 and 20-foot easement on Lot 2
- S. Anderson confirmed the City removed the officially mapped road designation.

Motion: P. Weyenberg / J. Kwiatkowski to approve the CSM.

- B. Nielsen asked the Ogdens if they intended to develop Lot 1 with light industrial.
- M. Ogden stated that long term, yes. It is zoned industrial, and it is what they do, however the lot has deed restrictions, and could not get sewer and water for 20 years without a

penalty of \$750,000. They are purchasing the property as long-term holding to prevent something else from going there.

- B. Nielsen questioned the future land use. M. Ogden responded he does not know about future land use; he knows it is zoned light industrial.
- P. Weyenberg questioned if there were specific plans
- J. Ogden stated that is true, no specific plans, Development will be smaller buildings with well and septic.

Motion carried by voice vote

Resolution 2025-15 – Certified Survey Map

Applicant: Brian and Kristine Stedl
Agent: Carow Land surveying
Location of Premises Affected: 1984 and 1994 Oakridge Rd
Tax Parcel No: 010-0312

- Brian Stedl, 1984 Oakridge road, purchased the property 13 years ago, it is zoned commercial. There are two addresses on the property, one is residential and the other is the pole barn. They are in the process of buying a different home and moving so they want to split the residential property from the commercial property.
- P. Weyenberg noted that mortgage companies do not like residential property on a commercially zoned parcel.
- B. Stedl confirmed that the small parcel will have to be rezoned to residential.
- Chad Wistow, Integrity Builders stated he owns the property now. He will retain the commercially zoned parcel for his business and sell Lot 1 with the house.
- P. Weyenberg questioned the language on the CSM, "old well"
- B. Stedl stated there are three wells on the property, one for the house, one for the pole barn and one for the old barn. All three wells are operable.

Motion: P. Weyenberg/ B. Nielsen to approve

Motion carried by voice vote

Update on Resolution 2025-14 Resolution for Petition to Winnebago County for the proposed Txt Amendment to Chapter 27 shoreland Zoning Code.

- E. Skerke provided a brief update on Resolution 2025-14. The Town Board took action in June to deny the petition to change the language. The County had their public hearing on July 1st, the Town Board wanted to send a message that they needed more information and more time. The County did hold their public hearing, and the Plan Commission passed the amended language. She believes they removed language related to Chapter 23 General Zoning from the amended version. This is now with the DNR for comment and still needs to go to the County Board for approval.

New Business

- E. Skerke stated that the Town Board approved a contract with Cedar Corp to do a Comprehensive Plan update and Comprehensive Outdoor Recreation Plan Update. The Plan Commission will be involved in the process. She will provide a copy of the proposal to the Plan Commission via email.
- J. Weiss stated the Town Board received three proposals, the Board felt Cedar Corp was the most comprehensive proposal, thus it was selected.
- B. Nielsen noted that it might be prudent for the plan to include information about climate resiliency, sustainability, or environmental disaster component to this plan. He would like to

see the Town of Neenah being self-sustaining, he is not sure which plan it is appropriate to be included in.

Old Business

- E. Skerke provided a brief update on the We Energies property on Breezewood Lane. Since the Town is currently working on the We Energies parcel issue related to the Homestead Acres Development, the Town has not pursued the Breezewood Lane issue.
- B. Nielsen requested an update to Homestead Acres Development. E. Skerke responded that the CSM is approved and recorded, and the Zoning Map Amendment is approved. She spoke with Lamers Realty recently and they are working on the final plans. We still need to work out a Developers Agreement.
- B. Nielsen requested that the Homestead Acres Development remain on the Plan Commission agenda for an update at each Plan Commission Meeting

Next regularly scheduled Plan Commission Meeting, Monday August 18, 2025 at 7:00 p.m.

Adjourn:

Motion: P. Weyenberg / B. Nielsen to adjourn. Motion carried. Adjourned at 7:52 pm

Respectfully submitted,

Ellen Skerke
Administrator-Clerk-Treasurer

Approved: DRAFT - Pending Approval

**TOWN OF NEENAH
WINNEBAGO COUNTY, WISCONSIN
RESOLUTION 2025-13**

**RESOLUTION APPROVING CERTIFIED SURVEY MAP
FOR 1573 OAKRIDGE ROAD – TOWN OF NEENAH
WINNEBAGO COUNTY PLANNING AND ZONING CSM LOG # 6471**

WHEREAS, Winnebago County Planning and Zoning submitted CSM Log # 6471 for Town review, as attached as Exhibit 1; and

WHEREAS, on July 21, 2025, the Town of Neenah Plan Commission held a meeting on a Certified Survey Map (CSM) filed by Davel Engineering on behalf of property owner Town of Neenah to establish a new lot as described on the attached CSM in the Town of Neenah, Winnebago County Planning and Zoning CSM Log # 6471; and

WHEREAS, at the meeting, the Plan Commission recommended approval of the above mentioned CSM; and

NOW THEREFORE BE IT RESOLVED that the Town Board approves the CSM for Town of Neenah, County Planning and Zoning CSM Log # 6471.

FURTHER RESOLVED that The Town Chairman and Town Administrator-Clerk-Treasurer are authorized to sign the above mentioned CSM.

Dated this 25th day of July 2025.

TOWN OF NEENAH

By:

Robert Schmeichel,
Town Chairperson

Attest:

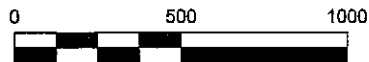
Ellen Skerke,
Town Administrator-Clerk-Treasurer

Certified Survey Map No. _____

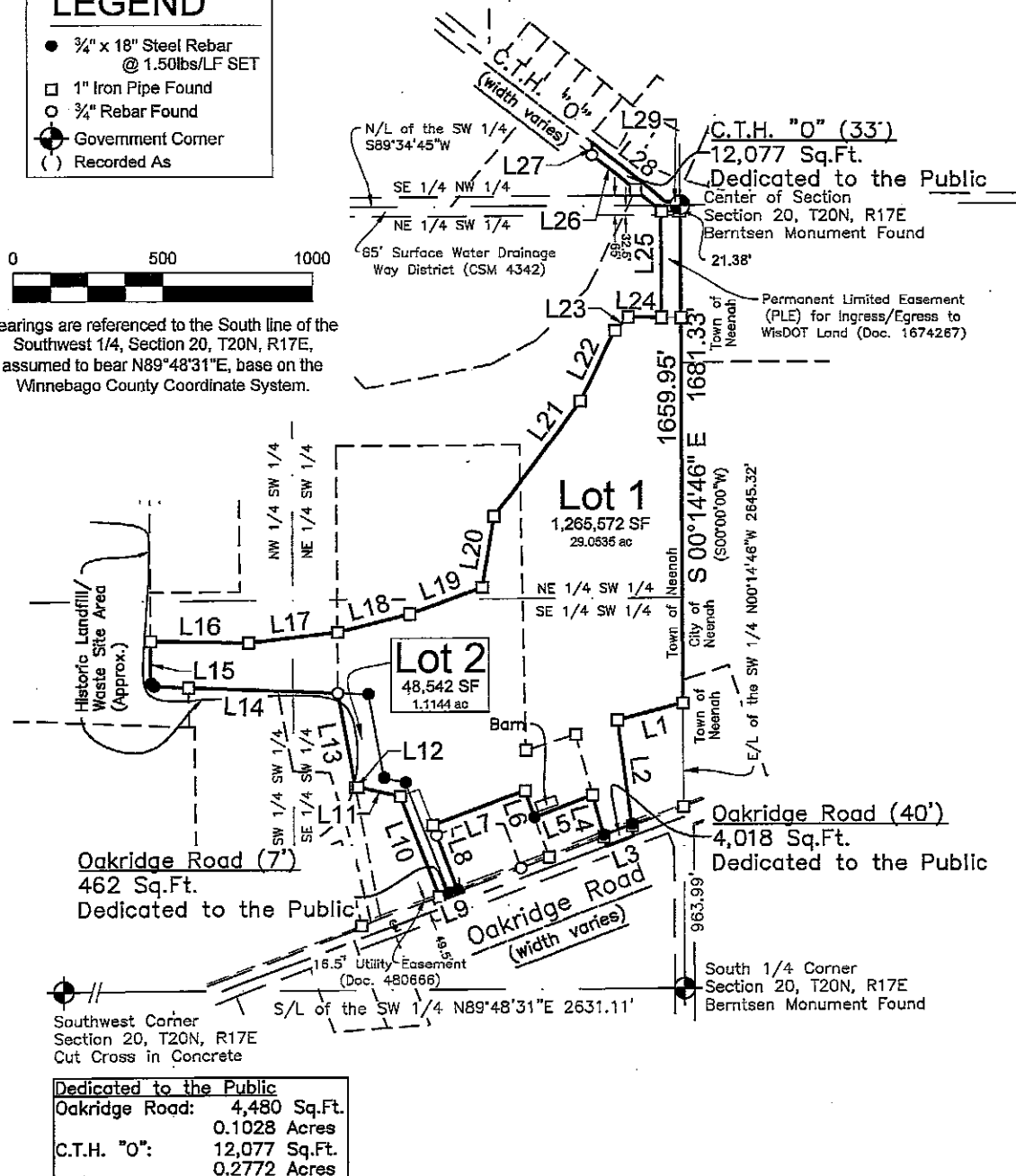
Part Lot 3, Certified Survey Map No. 5180 and Part of Lot 2, Certified Survey Map No. 4342, Located in the Northeast 1/4 of the Southwest 1/4 and in the Southeast 1/4 of the Southwest 1/4 and in the Southwest 1/4 of the Southwest 1/4 and in the Southeast 1/4 of the Northwest 1/4, all in Section 20, Township 20 North, Range 17 East, Town of Neenah, Winnebago County, Wisconsin.

LEGEND

- 3/4" x 18" Steel Rebar @ 1.50lbs/LF SET
- 1" Iron Pipe Found
- 3/4" Rebar Found
- ⊙ Government Corner
- () Recorded As



Bearings are referenced to the South line of the Southwest 1/4, Section 20, T20N, R17E, assumed to bear N89°48'31"E, base on the Winnebago County Coordinate System.



Caveat: Additional action is required. This map does NOT transfer ownership of the property or properties shown. Sale or transfer of ownership requires a separate document to be recorded at the Register of Deeds office.



DAVEL ENGINEERING & ENVIRONMENTAL, INC.

Civil Engineers and Land Surveyors

1184 Province Terrace, Menasha, WI 54952
Ph: 920-991-1866
www.davel.pro

Scott R. Andersen
Professional Land Surveyor
No. S-3169

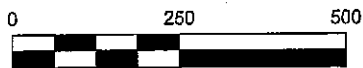
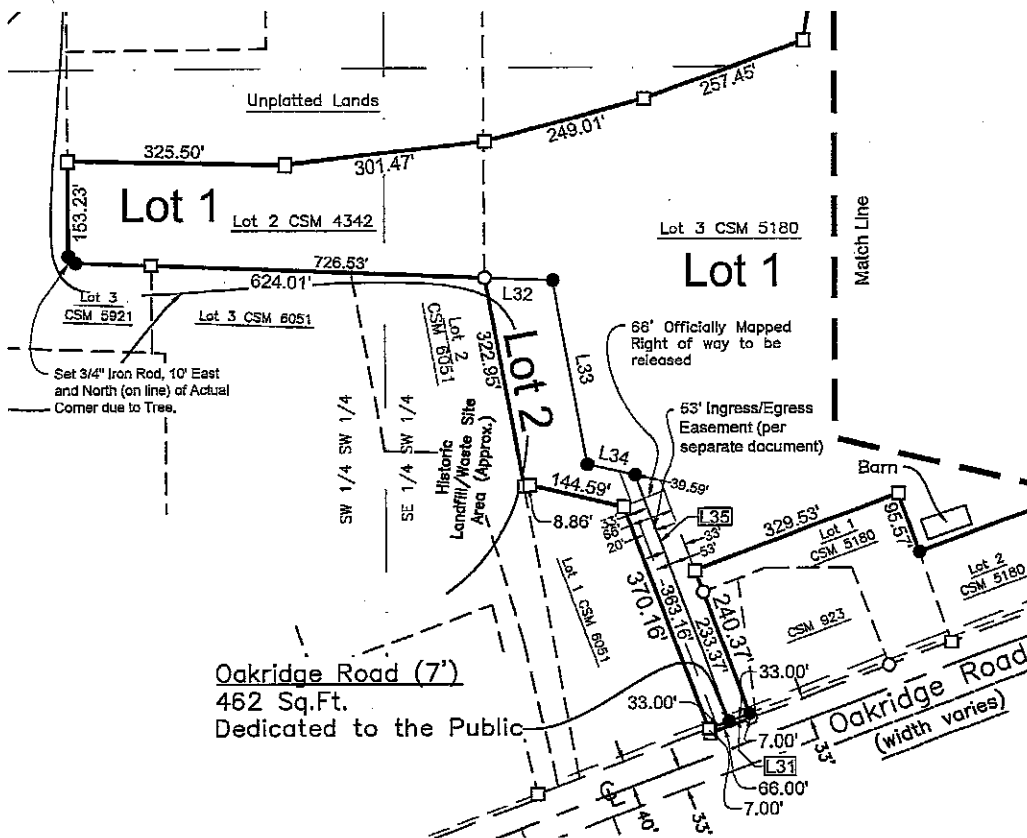
Date

Survey for:
Town of Neenah
1600 Breezewood Lane
Neenah, WI 54956

File: 8761CSM.dwg
Date: 07/16/2025
Drafted By: scott
Sheet: 1 of 7

Part Lot 3, Certified Survey Map No. 5180 and Part of Lot 2, Certified Survey Map No. 4342, Located in the Northeast 1/4 of the Southwest 1/4 and in the Southeast 1/4 of the Southwest 1/4 and in the Southwest 1/4 of the Southwest 1/4 and in the Southeast 1/4 of the Northwest 1/4, all in Section 20, Township 20 North, Range 17 East, Town of Neenah, Winnebago County, Wisconsin.

- ¾" x 18" Steel Rebar
@ 1.50lbs/LF SET
- 1" Iron Pipe Found
- ¾" Rebar Found
- ⊙ Government Corner
Recorded As



Bearings are referenced to the South line of the Southwest 1/4, Section 20, T20N, R17E, assumed to bear N89°48'31"E, base on the Winnebago County Coordinate System.



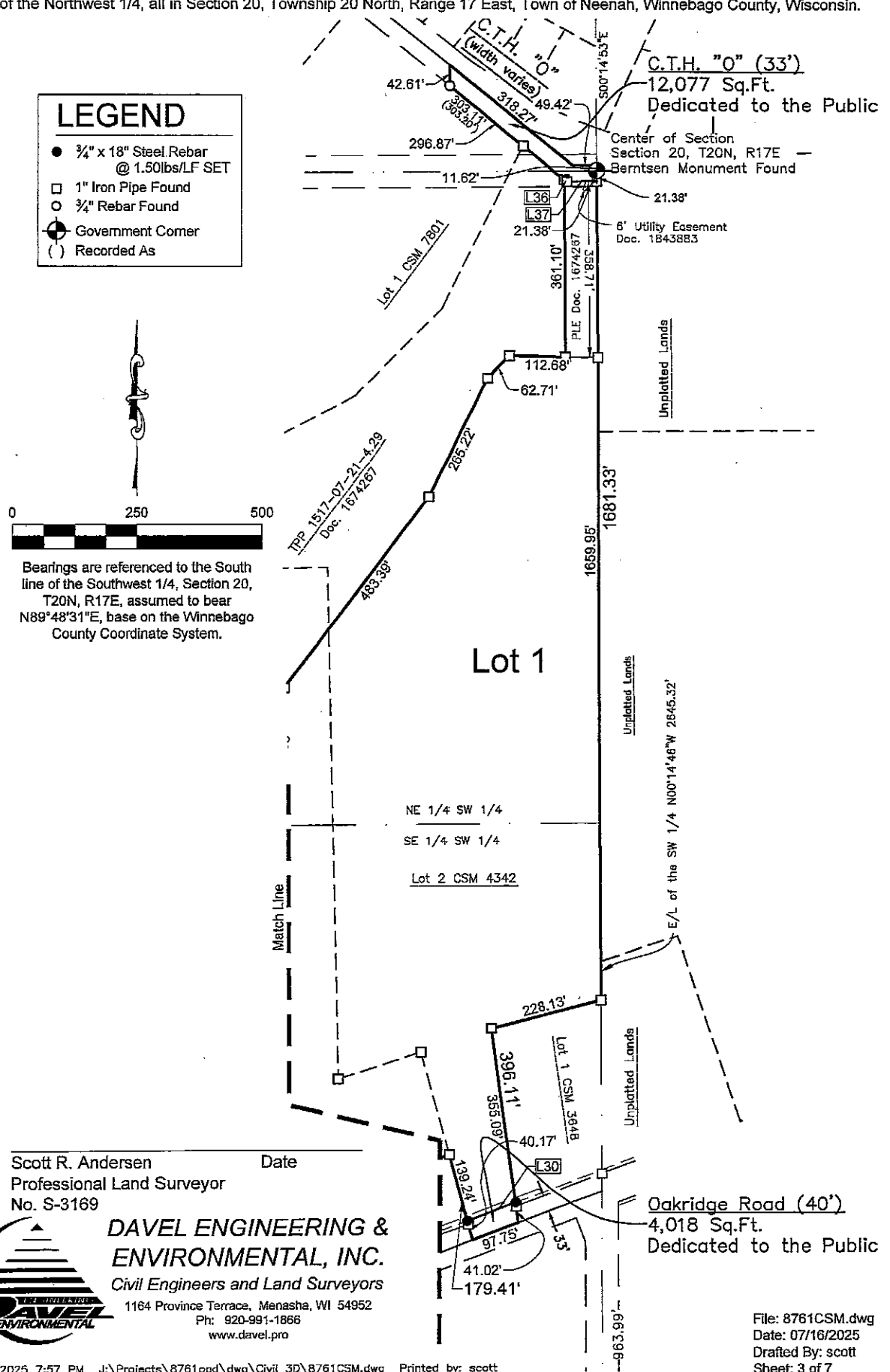
Ph: 920-991-1866
www.davel.pro

Date _____

File: 8761CSM.dwg
Date: 07/16/2025
Drafted By: scott
Sheet: 2 of 7

Certified Survey Map No.

Part Lot 3, Certified Survey Map No. 5180 and Part of Lot 2, Certified Survey Map No. 4342, Located in the Northeast 1/4 of the Southwest 1/4 and in the Southeast 1/4 of the Southwest 1/4 and in the Southwest 1/4 of the Southwest 1/4 and in the Southeast 1/4 of the Northwest 1/4, all in Section 20, Township 20 North, Range 17 East, Town of Neenah, Winnebago County, Wisconsin.



Certified Survey Map No. _____

Part Lot 3, Certified Survey Map No. 5180 and Part of Lot 2, Certified Survey Map No. 4342, Located in the Northeast 1/4 of the Southwest 1/4 and in the Southeast 1/4 of the Southwest 1/4 and in the Southwest 1/4 of the Southwest 1/4 and in the Southeast 1/4 of the Northwest 1/4, all in Section 20, Township 20 North, Range 17 East, Town of Neenah, Winnebago County, Wisconsin.

Surveyor's Certificate

I, Scott R. Andersen, Professional Land Surveyor, hereby certify: That in full compliance with the provisions of Chapter 236 of the Wisconsin Statutes and the subdivision regulations of the Town of Neenah and Winnebago County, and under the direction of the Town of Neenah, the property owners of said land, I have surveyed, divided and mapped this Certified Survey Map; that such map correctly represents all exterior boundaries and the subdivision of the land surveyed; and that this land is Part Lot 3, Certified Survey Map No. 5180 (Doc. 1221411) and Part of Lot 2, Certified Survey Map No. 4342 (Doc. 1070011), Located in the Northeast 1/4 of the Southwest 1/4 and in the Southeast 1/4 of the Southwest 1/4 and in the Southwest 1/4 of the Southwest 1/4 and in the Southeast 1/4 of the Northwest 1/4, all in Section 20, Township 20 North, Range 17 East, Town of Neenah, Winnebago County, Wisconsin, containing 1,330,671 Sq. Ft. Square Feet (30.5479 Acres) of land described as follows:

Commencing at the South 1/4 Corner of Section 20, Township 20 North, Range 17 East; thence N00°14'46"W along the east line of the Southwest 1/4 of said Section 20, 963.99 feet to the Point Of Beginning of the parcel to be Described; thence S75°47'37"W, 228.13 feet; thence S07°51'10"E, 396.11 feet to the centerline of Oakridge Road; thence S69°18'28"W along said centerline, 97.75 feet; thence N15°23'57"W, 179.41 feet; thence S69°13'14"W, 208.31 feet; thence N19°20'23"W, 95.57 feet; thence S69°13'14"W, 329.53 feet; thence S20°42'03"E, 240.37 feet; thence S69°18'28"W, 66.00 feet; thence N20°42'03"W, 370.16 feet; thence N77°10'05"W, 144.59 feet; thence S79°26'42"W, 8.86 feet; thence N10°33'13"W, 322.95 feet; thence N87°49'50"W, 624.01 feet; thence N00°28'18"W, 153.23 feet; thence S88°58'12"E, 325.50 feet; thence N83°09'20"E, 301.47 feet; thence N75°16'49"E, 249.01 feet; thence N69°55'14"E, 257.45 feet; thence N09°11'49"E, 243.98 feet; thence N36°42'27"E, 483.39 feet; thence N26°28'19"E, 265.22 feet; thence N44°39'12"E, 62.71 feet; thence S88°58'10"E, 112.68 feet; thence N00°14'46"W, 361.10 feet to the Southerly Right-Of-Way line of CTH "O"; thence N51°00'10"W along said Right-Of-Way, 296.87 feet; thence N00°14'22"W, 42.61 feet to the centerline of C.T.H. "O" as shown on CSM 3648 and CSM 4342; thence S51°00'10"E along said centerline, 318.27 feet; thence N89°40'07"E along said centerline, 49.42 feet to the east line of the Northwest 1/4 of said Section 20; thence S00°14'53"E along said east line, 11.62 feet to the Center of said Section 20, as monumented; thence S00°14'46"E along the east line of the Southwest 1/4 of said Section 20, 1681.33 feet to the Point Of Beginning. Described parcel is subject to all easements, and restrictions of record.

Given under my hand this _____ day of _____, _____.

Scott R. Andersen, Wisconsin Professional Land Surveyor No. S-3169

Certified Survey Map No. _____

Part Lot 3, Certified Survey Map No. 5180 and Part of Lot 2, Certified Survey Map No. 4342, Located in the Northeast 1/4 of the Southwest 1/4 and in the Southeast 1/4 of the Southwest 1/4 and in the Southwest 1/4 of the Southwest 1/4, all in Section 20, Township 20 North, Range 17 East, Town of Neenah, Winnebago County, Wisconsin.

LINE TABLE			
Line	Bearing	Length	(Recorded As)
L1	S 75°47'37" W	228.13'	(S76°02'25"W) (227.90')
L2	S 07°51'10" E	396.11'	(S07°35'44"E) (396.09')
L3	N 69°18'28" E	97.75'	(S69°33'20"W) (97.97')
L4	N 15°23'57" W	179.41'	(S15°09'40"E)
L5	S 69°13'14" W	208.31'	(S69°33'20"W) (208.23')
L6	N 19°20'23" W	95.57'	(S19°00'17"E)
L7	S 69°13'14" W	329.53'	(S69°33'20"W) (329.74')
L8	S 20°42'03" E	240.37'	(N20°26'40"W) (240.25')
L9	N 69°18'28" E	66.00'	(S69°33'20"W)
L10	N 20°42'03" W	370.16'	(N20°26'40"W) (370.01')
L11	N 77°10'05" W	144.59'	(S76°54'40"W)
L12	S 79°26'42" W	8.86'	(S79°42'07"W)
L13	N 10°33'13" W	322.95'	(N10°17'48"W) (322.87')
L14	N 87°49'50" W	624.01'	(N87°34'25"W) (624.00')
L15	N 00°28'18" W	153.23'	(N00°10'25"W)
L16	S 88°58'12" E	325.50'	(325.43')
L17	N 83°09'20" E	301.47'	
L18	N 75°16'49" E	249.01'	(249.04')
L19	N 69°55'14" E	257.45'	

LINE TABLE			
Line	Bearing	Length	(Recorded As)
L20	N 09°11'49" E	243.98'	
L21	N 36°42'27" E	483.39'	
L22	N 26°28'19" E	265.22'	
L23	N 44°39'12" E	62.71'	
L24	S 88°58'10" E	112.68'	(112.65')
L25	N 00°14'46" W	361.10'	(360.75')
L26	N 51°00'10" W	296.87'	(S50°45'05"E) (S50°59'40"E)
L27	N 00°14'22" W	42.61'	
L28	S 51°00'10" E	318.27'	(S50°45'05"E) (318.29')
L29	N 89°40'07" E	49.42'	(S89°39'47"E) (49.53')
L30	S 69°18'28" W	103.16'	
L31	N 69°18'28" E	33.00'	(S69°33'20"W) (S69°17'55"W)
L32	N 87°49'50" W	102.52'	(S69°33'20"W) (102.44') (S69°17'55"W)
L33	N 10°33'13" W	285.31'	
L34	N 77°10'05" W	73.37'	
L35	N 20°42'03" W	401.27'	
L36	S 51°00'10" E	6.24'	(S50°59'40"E)
L37	N 89°40'07" E	61.16'	(S89°39'47"E) (61.21')

Scott R. Andersen
Professional Land Surveyor
No. S-3169

Date _____

Certified Survey Map No. _____

Part Lot 3, Certified Survey Map No. 5180 and Part of Lot 2, Certified Survey Map No. 4342, Located in the Northeast 1/4 of the Southwest 1/4 and in the Southeast 1/4 of the Southwest 1/4 and in the Southwest 1/4 of the Southwest 1/4, all in Section 20, Township 20 North, Range 17 East, Town of Neenah, Winnebago County, Wisconsin.

Owners' Certificate

The Town of Neenah, a Wisconsin Municipal corporation duly organized and existing under and by virtue of the Laws of the State of Wisconsin, as the property owners, do hereby certify that we caused the land above described to be surveyed, divided, and mapped, all as shown and represented on this map. We also certify this plat is required by s.236.10 or s.236.12 to be submitted to the following for approval or objection:

Town of Neenah
City of Neenah (Extraterritorial Review)
Winnebago County

Dated this _____ day of _____, 20_____.

Chairman

Print Name

Town Clerk

Print Name

State of Wisconsin)
)ss
_____ County)

Personally came before me this _____ day of _____, 20_____.

the above named, officers of said corporation, and acknowledged that they executed the foregoing instrument as such officers as the deed of said corporation, by its authority.

Notary Public, Wisconsin

My commission expires: _____

City of Neenah Approval Certificate (Extraterritorial)

Resolved, that this certified survey map in the Town of Neenah, Winnebago County, the Town of Neenah, the property owner(s), is hereby approved by the City of Neenah.

Plan Commission Representative

Print Name

Date

Scott R. Andersen Date
Professional Land Surveyor
No. S-3169

**TOWN OF NEENAH
WINNEBAGO COUNTY, WISCONSIN
RESOLUTION 2025-15**

**RESOLUTION APPROVING CERTIFIED SURVEY MAP
FOR 1984 & 1994 OAKRIDGE ROAD – BRIAN & KRISTINE STEDL
WINNEBAGO COUNTY PLANNING AND ZONING CSM Log # 6470**

WHEREAS, Winnebago County Planning and Zoning submitted CSM Log # 6470 for Town review, as attached as Exhibit 1; and

WHEREAS, on July 21, 2025, the Town of Neenah Plan Commission held a meeting on a Certified Survey Map (CSM) filed by Carow Land Surveying & Environmental on behalf of property owner Brian and Kristine Stedl to establish a new lot as described on the attached CSM in the Town of Neenah, Winnebago County Planning and Zoning CSM Log # 6470; and

WHEREAS, at the meeting, the Plan Commission recommended approval of the above mentioned CSM; and

NOW THEREFORE BE IT RESOLVED that the Town Board approves the CSM for Brian & Kristine Stedl, County Planning and Zoning CSM Log # 6470.

FURTHER RESOLVED that The Town Chairman and Town Administrator-Clerk-Treasurer are authorized to sign the above mentioned CSM.

Dated this 25th day of July 2025.

TOWN OF NEENAH

By:

Robert Schmeichel,
Town Chairperson

Attest:

Ellen Skerke,
Town Administrator-Clerk-Treasurer

CERTIFIED SURVEY MAP NO. _____

BEING PART OF THE NORTHWEST 1/4 OF THE FRACTIONAL
SOUTHWEST 1/4, PART OF THE SOUTHEAST 1/4 OF THE
FRACTIONAL NORTHWEST 1/4, AND PART OF THE SOUTHWEST 1/4
OF THE FRACTIONAL NORTHWEST 1/4 OF SECTION 30, TOWNSHIP
20 NORTH, RANGE 17 EAST, TOWN OF NEENAH, WINNEBAGO
COUNTY, WISCONSIN.

LEGEND:

- = 1 1/2" X 18" O.D. ROUND IRON PIPE SET,
WEIGHING 1.13 LBS. PER LIN. FT.
- ⊙ = 3/4" SOLID ROUND IRON REBAR FOUND
- ⊙ = 1 1/2" O.D. ROUND IRON PIPE FOUND
- ⊙ = 2" O.D. ROUND IRON PIPE FOUND
- ⊙ = BERNTSEN MONUMENT FOUND
- () = RECORDED AS BEARING OR DISTANCE
- x- = EXISTING METAL PANEL FENCE
- = POWER POLE
- ⊙ = SEPTIC TANK
- ⊙ = SEPTIC VENT
- ⊙ = WATER SPIGOT
- ⊙ = WELL
- ⊙ = APPROX. WETLANDS
PER GIS MAPPING

OWNER(S) OF RECORD:

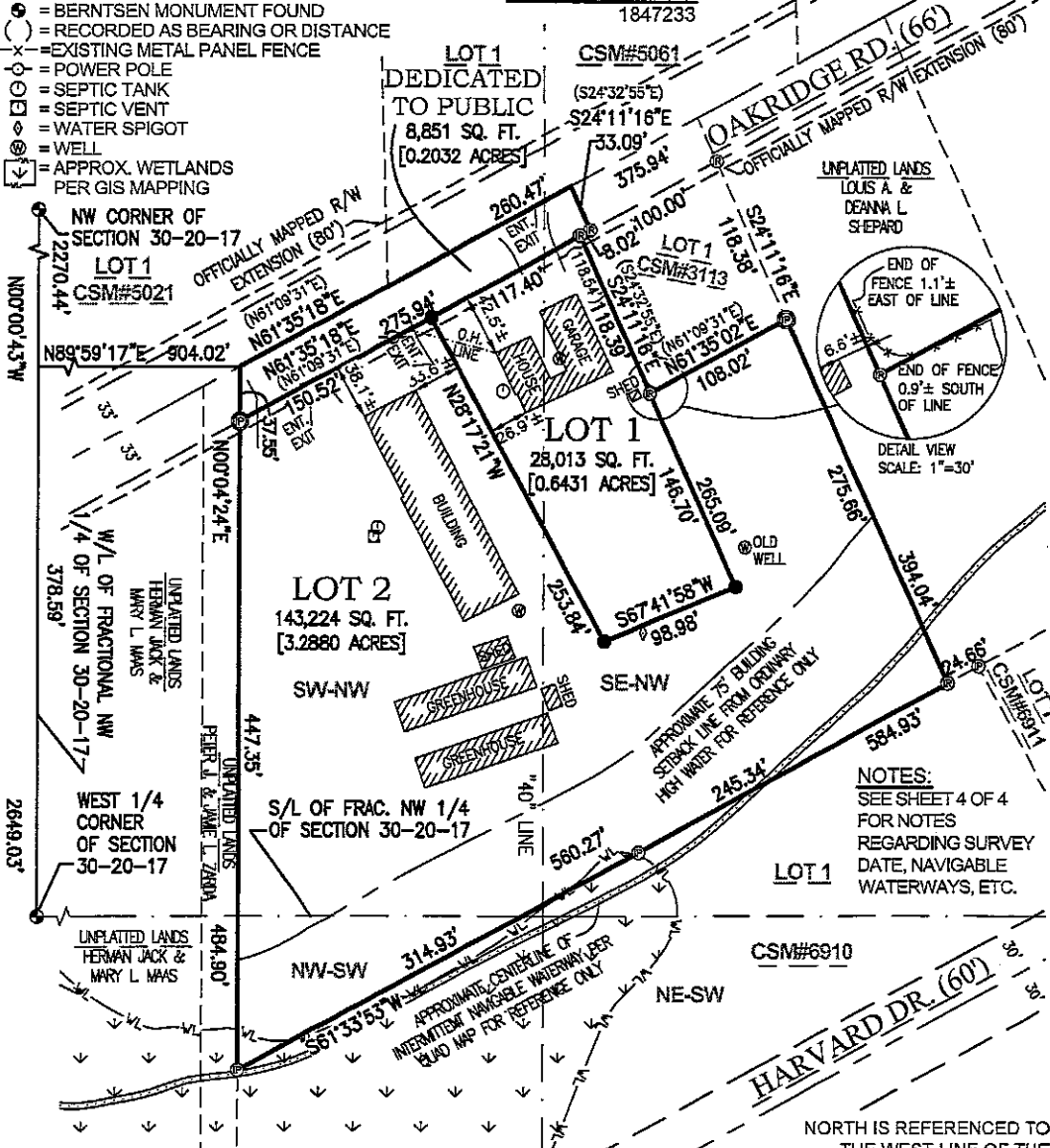
BRIAN P. & KRISTINE L. STEDL

PARCEL NO.(S):

0100312

DOCUMENT NO.(S):

1847233



NOTES:

SEE SHEET 4 OF 4
FOR NOTES
REGARDING SURVEY
DATE, NAVIGABLE
WATERWAYS, ETC.

CHRISTOPHER E. PERREAULT, PLS-2249 DATED
CAROW LAND SURVEYING & ENVIRONMENTAL
615 N. LYNDALE DR., APPLETON, WI 54914
N5841 STATE HIGHWAY 47-55, SHAWANO, WI 54166
PHONE: (920)731-4168
A2504.59 DATED:06/03/2025 DRAFTED BY:am/fnz-NJO

SHEET 1 OF 4 SHEETS

NORTH IS REFERENCED TO
THE WEST LINE OF THE
FRACTIONAL NORTHWEST 1/4
OF SECTION 30, TOWNSHIP
20 NORTH, RANGE 17 EAST,
TOWN OF NEENAH,
WINNEBAGO COUNTY,
WISCONSIN, WHICH BEARS
N00°00'43"W PER THE
WISCONSIN COUNTY
COORDINATE SYSTEM
(WINNEBAGO COUNTY)

GRAPHIC SCALE: 1" = 100'



CERTIFIED SURVEY MAP NO. _____

BEING PART OF THE NORTHWEST ¼ OF THE FRACTIONAL SOUTHWEST ¼, PART OF THE SOUTHEAST ¼ OF THE FRACTIONAL NORTHWEST ¼ AND PART OF THE SOUTHWEST ¼ OF THE FRACTIONAL NORTHWEST ¼, SECTION 30, TOWNSHIP 20 NORTH, RANGE 17 EAST, TOWN OF NEENAH, WINNEBAGO COUNTY, WISCONSIN.

SURVEYOR'S CERTIFICATE:

I, CHRISTOPHER E. PERREAULT, PROFESSIONAL WISCONSIN LAND SURVEYOR, CERTIFY THAT I HAVE SURVEYED, DIVIDED, AND MAPPED PART OF THE NORTHWEST ¼ OF THE FRACTIONAL SOUTHWEST ¼, PART OF THE SOUTHEAST ¼ OF THE FRACTIONAL NORTHWEST ¼ AND PART OF THE SOUTHWEST ¼ OF THE FRACTIONAL NORTHWEST ¼, SECTION 30, TOWNSHIP 20 NORTH, RANGE 17 EAST, TOWN OF NEENAH, WINNEBAGO COUNTY, WISCONSIN, BOUNDED AND DESCRIBED AS FOLLOWS: COMMENCING AT THE WEST ¼ CORNER OF SAID SECTION 30; THENCE N00°00'43"W, 378.59 FEET ALONG THE WEST LINE OF THE FRACTIONAL NORTHWEST ¼ OF SECTION 30; THENCE N89°59'17"E, 904.02 FEET TO THE CENTERLINE OF OAKRIDGE ROAD AND THE POINT OF BEGINNING; THENCE N61°35'18"E, 260.47 FEET ALONG SAID CENTERLINE TO A SOUTHWESTERLY LINE OF CERTIFIED SURVEY MAP NO. 3113; THENCE S24°11'16"E, 33.09 FEET ALONG SAID SOUTHWESTERLY LINE TO THE SOUTHEAST LINE OF OAKRIDGE ROAD; THENCE S61°35'18"W, 8.02 FEET ALONG SAID SOUTHEAST LINE TO THE SOUTHWEST LINE OF LOT 1 OF CERTIFIED SURVEY MAP NO. 3113; THENCE S24°11'16"E, 118.39 FEET ALONG SAID SOUTHWEST LINE TO THE SOUTHEAST LINE OF SAID LOT 1; THENCE N61°35'02"E, 108.02 FEET ALONG SAID SOUTHEAST LINE; THENCE S24°11'16"E, 275.66 FEET TO THE NORTHWEST LINE OF LOT 1 OF CERTIFIED SURVEY MAP NO. 6910; THENCE S61°33'53"W, 560.27 FEET ALONG SAID NORTHWEST LINE; THENCE N00°04'24"E, 484.90 FEET TO THE POINT OF BEGINNING. SUBJECT TO ALL EASEMENTS AND RESTRICTIONS OF RECORD.

THAT I HAVE MADE SUCH SURVEY UNDER THE DIRECTION OF INTEGRITY BUILDERS, ATTENTION CHAD WISKOWSKI, 2540 OAKRIDGE RD., NEENAH, WI 54956.

THAT THIS MAP IS A CORRECT REPRESENTATION OF THE EXTERIOR BOUNDARY LINES OF THE LAND SURVEYED AND THE COMBINATION OF THAT LAND.

THAT I HAVE FULLY COMPLIED WITH THE PROVISIONS OF CHAPTER 236.34 OF THE WISCONSIN STATUTES AND THE SUBDIVISION ORDINANCE OF WINNEBAGO COUNTY AND THE TOWN OF NEENAH.

CHRISTOPHER E. PERREAULT, PLS-2249 DATED
CAROW LAND SURVEYING & ENVIRONMENTAL
615 N. LYNNDALE DR., APPLETON, WI 54914
N5841 S.T.H. "47-55", SHAWANO, WI 54166
PHONE: (920)731-4168
A2504.59 (RFR) 6-3-2025

NOTES:

- (1) THIS CSM IS ALL OF TAX PARCEL NO. (S): 0100312.
- (2) THE PROPERTY OWNER (S) OF RECORD IS (ARE): BRIAN P. STEDL AND KRISTINE L. STEDL.
- (3) THE CSM IS WHOLLY CONTAINED WITHIN THE PROPERTY DESCRIBED IN THE FOLLOWING RECORDED INSTRUMENT (S): DOCUMENT NO.S: 1847233.

COUNTY PLANNING AND ZONING COMMITTEE APPROVAL:

PURSUANT TO THE WINNEBAGO COUNTY SUBDIVISION ORDINANCE, ALL REQUIREMENTS FOR APPROVAL HAVE BEEN FULFILLED. THIS CERTIFIED SURVEY MAP WAS APPROVED THIS _____ DAY OF _____, 20____.

CHAIRPERSON, WINNEBAGO COUNTY PLANNING AND ZONING COMMITTEE.

TOWN BOARD CERTIFICATE:

WE HEREBY CERTIFY THAT THIS CERTIFIED SURVEY MAP WAS APPROVED AND ACCEPTED BY THE TOWN BOARD OF THE TOWN OF NEENAH ON THE _____ DAY OF _____, 20____.

TOWN CHAIRMAN

TOWN CLERK

CERTIFIED SURVEY MAP NO.

BEING PART OF THE NORTHWEST $\frac{1}{4}$ OF THE FRACTIONAL SOUTHWEST $\frac{1}{4}$, PART OF THE SOUTHEAST $\frac{1}{4}$ OF THE FRACTIONAL NORTHWEST $\frac{1}{4}$ AND PART OF THE SOUTHWEST $\frac{1}{4}$ OF THE FRACTIONAL NORTHWEST $\frac{1}{4}$, SECTION 30, TOWNSHIP 20 NORTH, RANGE 17 EAST, TOWN OF NEENAH, WINNEBAGO COUNTY, WISCONSIN.

CITY OF NEENAH APPROVAL:

THIS CERTIFIED SURVEY MAP WAS APPROVED BY THE CITY OF NEENAH ON THIS _____ DAY
OF _____, 20_____.

COMMUNITY DEVELOPMENT DEPARTMENT

TREASURER CERTIFICATE:

I HEREBY CERTIFY THAT THERE ARE NO UNPAID TAXES OR UNPAID SPECIAL ASSESSMENTS ON ANY OF THE LAND INCLUDED ON THIS CERTIFIED SURVEY MAP.

TOWN TREASURER _____ DATED _____ COUNTY TREASURER _____ DATED _____

VILLAGE OF FOX CROSSING APPROVAL:

THIS CERTIFIED SURVEY MAP WAS APPROVED BY THE VILLAGE OF FOX CROSSING ON THIS
DAY OF , 20 .

GEORGE DEARBORN

OWNER'S CERTIFICATE:

AS OWNER (S), I (WE) HEREBY CERTIFY I (WE) CAUSED THE LAND DESCRIBED ON THIS CERTIFIED SURVEY MAP TO BE SURVEYED, DIVIDED, MAPPED AND DEDICATED AS SHOWN ON THIS MAP. I (WE) ALSO CERTIFY THAT THIS MAP REQUIRES THE APPROVAL OF THE FOLLOWING: WINNEBAGO COUNTY, TOWN OF NEENAH, VILLAGE OF FOX CROSSING AND CITY OF NEENAH.

IN WITNESS THEREOF:

BRIAN P. STEDL

KRISTINE L. STEDL

STATE OF WISCONSIN)
) SS
 COUNTY)

PERSONALLY CAME BEFORE ME THIS _____ DAY OF _____, 20____,
THE ABOVE NAMED OWNER (S), TO ME KNOWN TO BE THE PERSON (S) WHO EXECUTED THE
FOREGOING INSTRUMENT AND ACKNOWLEDGED THE SAME.

NOTARY PUBLIC.

_____, WISCONSIN
MY COMMISSION EXPIRES _____

CHRISTOPHER E. PERREAULT PLS-2249, DATED
CAROW LAND SURVEYING & ENVIRONMENTAL
615 N. LYNNDAL DR., APPLETON, WI 54914
N5841 S.T.H. "47-55", SHAWANO, WI 54166
PHONE: (920)731-4168
A2504.59 (RFR) 6-3-2025

CERTIFIED SURVEY MAP NO. _____

BEING PART OF THE NORTHWEST ¼ OF THE FRACTIONAL SOUTHWEST ¼, PART OF THE SOUTHEAST ¼ OF THE FRACTIONAL NORTHWEST ¼ AND PART OF THE SOUTHWEST ¼ OF THE FRACTIONAL NORTHWEST ¼, SECTION 30, TOWNSHIP 20 NORTH, RANGE 17 EAST, TOWN OF NEENAH, WINNEBAGO COUNTY, WISCONSIN.

ADDITIONAL NOTES:

- THIS MAP DOES NOT TRANSFER PROPERTY OWNERSHIP OF THE LOTS HEREON. SALE OR TRANSFER OF THE LOTS REQUIRES A DEED.
- FIELD SURVEY DATE: 5-6-2025
- THE ORDINARY HIGH WATER MARK SETBACK IS NOT BASED ON AN OFFICIAL DETERMINATION AND PRIOR TO ANY BUILDING, AN OFFICIAL DETERMINATION OF THE ORDINARY HIGH WATER MUST BE MADE BY THE WINNEBAGO COUNTY ZONING DEPARTMENT OR OTHER AUTHORIZED PERSON. ALSO ALL BUILDING SETBACKS AND OTHER LAND USE REQUIREMENTS SHOULD BE VERIFIED BY THE WINNEBAGO COUNTY ZONING OFFICE AND TOWN OF NEENAH PRIOR TO ANY CONSTRUCTION OR OTHER LAND USE ACTIVITY.
- PRIOR TO ANY CONSTRUCTION CONTACT WISCONSIN DEPARTMENT OF NATURAL RESOURCES TO DETERMINE NAVIGABILITY OF WATERWAY AND LOCATION OF ORDINARY HIGH WATER.
- ANY LAND BELOW THE ORDINARY HIGH WATER MARK OF A LAKE OR A NAVIGABLE STREAM IS SUBJECT TO THE PUBLIC TRUST IN NAVIGABLE WATERS THAT IS ESTABLISHED UNDER ARTICLE IX, SECTION 1 OF THE STATE CONSTITUTION.
- THE LOCATION OF THE APPROXIMATE ORDINARY HIGH WATER MARK SHALL BE THE POINT ON THE BANK OF A NAVIGABLE STREAM OR ON THE SHORE OF A LAKE UP TO WHICH THE PRESENCE AND ACTION OF SURFACE WATER IS SO CONTINUOUS AS TO LEAVE A DISTINCTIVE MARK BY EROSION, DESTRUCTION OF TERRESTRIAL VEGETATION, OR OTHER EASILY RECOGNIZED CHARACTERISTICS.

CHRISTOPHER E. PERREAULT PLS-2249, DATED
CAROW LAND SURVEYING & ENVIRONMENTAL
615 N. LYNNDAL DR., APPLETON, WI 54914
N5841 S.T.H. "47-55", SHAWANO, WI 54166
PHONE: (920)731-4168
A2504.59 (RFR) 6-3-2025